

KENNEDYSEWING.COM

KENNEDY SEWING AND CUTTING SUPPLY, LLC

PLANT PROCESS DESCRIPTION

Raw material is transferred from the trucks to two cyclones which drop to either of two storage silos (approximately 10,000 cubic feet each). Raw material is unloaded at 10,000 to 12,000 lbs./hr.

Raw material enters via screw conveyor and is then air conveyed to an 8,000-gallon mix tank. The digesters are also approximately 8,000 gallons each. The capacity of the mix tank / digester system is about 120,000lbs. per day but could vary somewhat based on raw material.

The steam from the digested cook passes through a condenser to heat water for the hot water tank. The product slurry is then transferred to a storage tank that serves as retention for material to begin a continuous flow through the rest of the process.

The bleached slurry is then pumped through an inline mixer where a final pH adjustment is made. The pH adjusted slurry is dewatered by use of a belt press. The belt press and belt filter can dewater approximately 60,000 lbs. per day on a dry basis. The fiber cake is then transferred to one of two ring dryers where it is dried.

The dried product is dropped into the hammer mill feed bin and then transferred with a dual screw conveyor to a 100 HP mill. The packaging system has a capacity of about 60,000 lbs. per day, but this can vary with product density. The product is check weighed and palletized next. The finished pallets are labelled, and stretch wrapped for shipping.

PULP PROCESSING PLANT

Available for Immediate Sale, subject to prior sale. Main components are as follows with descriptions and photos:

LETSCH HOT WATER TANK

SILOS (3) – Approx 16' x 70' & 12' x 20'

CYCLONE SEPARATORS

TANK (CHEMICAL STORAGE)

HEAT EXCHANGER

TANK (SCRUBBER WATER)

PUMPS

BLOWER UNITS

BAGHOUSE DUST COLLECTOR

QUALITY CONTAINMENT CO TANK (DIGESTER)

KIRK & BLUM TANK (MIXING)

TANK (HOLDING)

KIRK & BLUM TANK (BLEACH)

BLEACH TOWER

VACUUM PUMP

SEPARATOR

PHOENIX BELT FILTER

BELT FILTER DISCHARGE SYSTEM

PHOENIX BELT PRESS

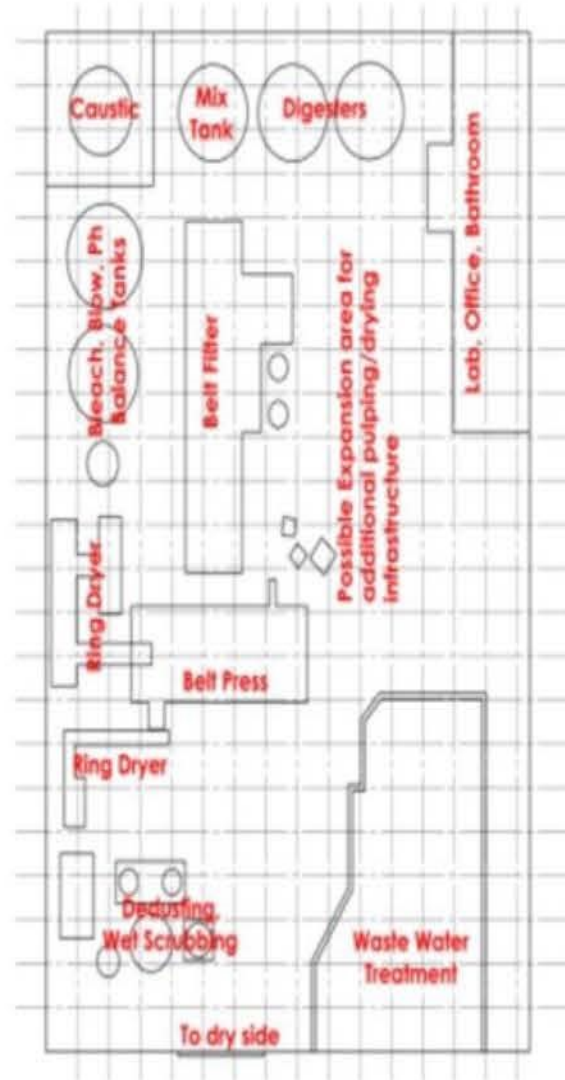
FLUID ENERGY ALJET RING DRYER (2 Units)

DUCON SCRUBBER COLUMN (SCRUBBER #1)

**FISHER-KLOSTERMAN SCRUBBER COLUMN
(SCRUBBER #2)**

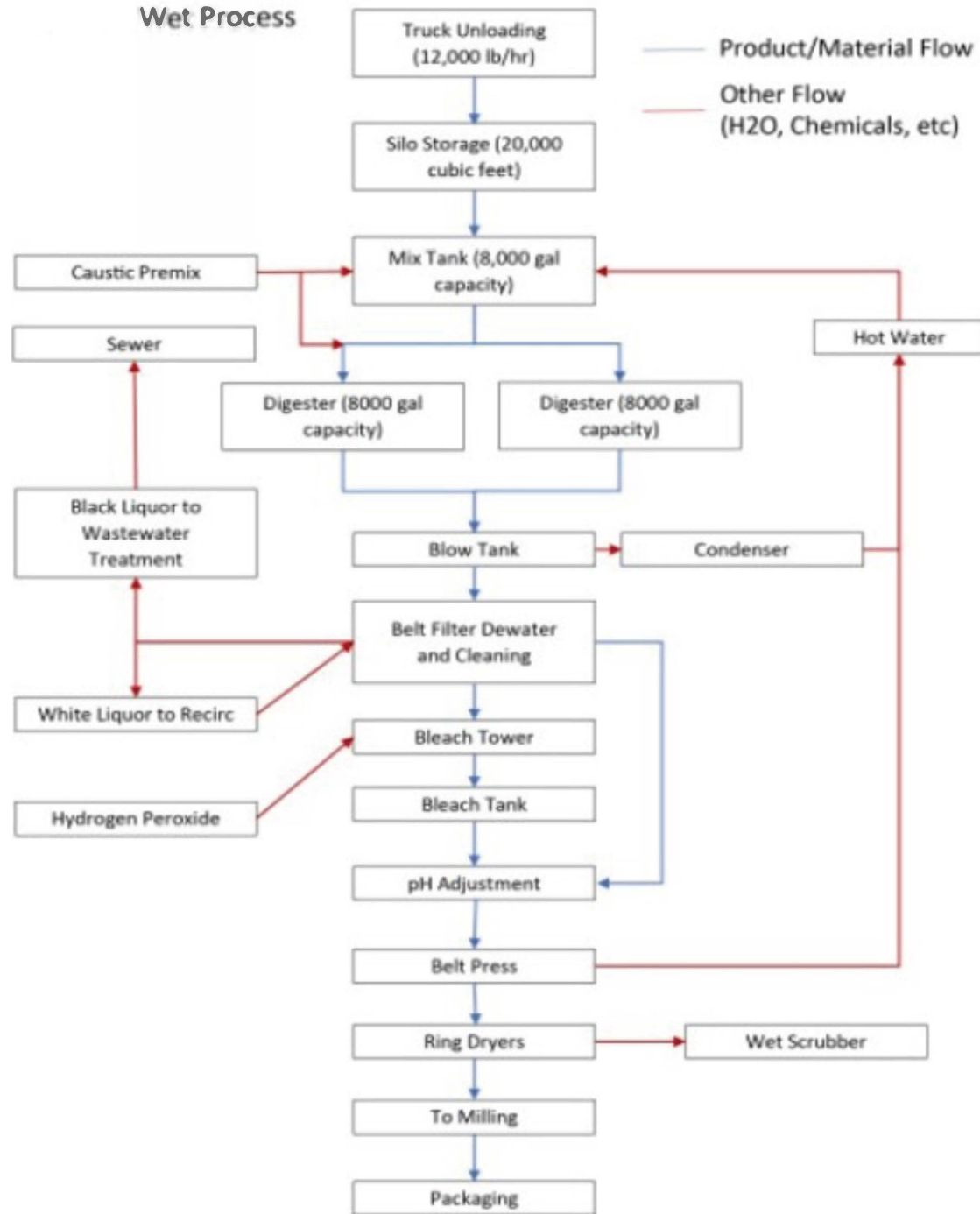
****Full List available upon request****

Wet Side Floor Plan



5 ft by 5 ft grid

Wet Process





Item 51 – Cyclone Separator (1 of 3)



Item 53 – Ducon Scrubber Column



Item 54 – Fisher-Klosterman Scrubber Column



Item 88 – Welded Carbon Steel Feed Hopper



Item 91 – Fisher-Klosterman Cyclone Separator



Item 112 – Paper/Poly Bag Packaging System



Item 113 – Bulk Bag Packaging System



Item 24 – Quality Containment Digester Tank



Item 26 – Kirk & Blum S/S Mixing Tank



Item 28 – Welded Carbon Steel Storage Tank



Item 39 – Phoenix Belt Filter



Item 29 – Kirk & Blum S/S Bleach Tank



Item 30 – S/S Bleach Tower



Item 43 – Phoenix Belt Press



Item 16 – Sly Baghouse Dust Collector



Item 24 – Quality Containment Digester Tank



Item 49 – Fluid Energy Aljet Ring Dryer (#1)



Item 50 – Fluid Energy Aljet Ring Dryer (#2)



Item 1 – Welded Carbon Steel Silo



Item 4 – Welded Carbon Steel Silo